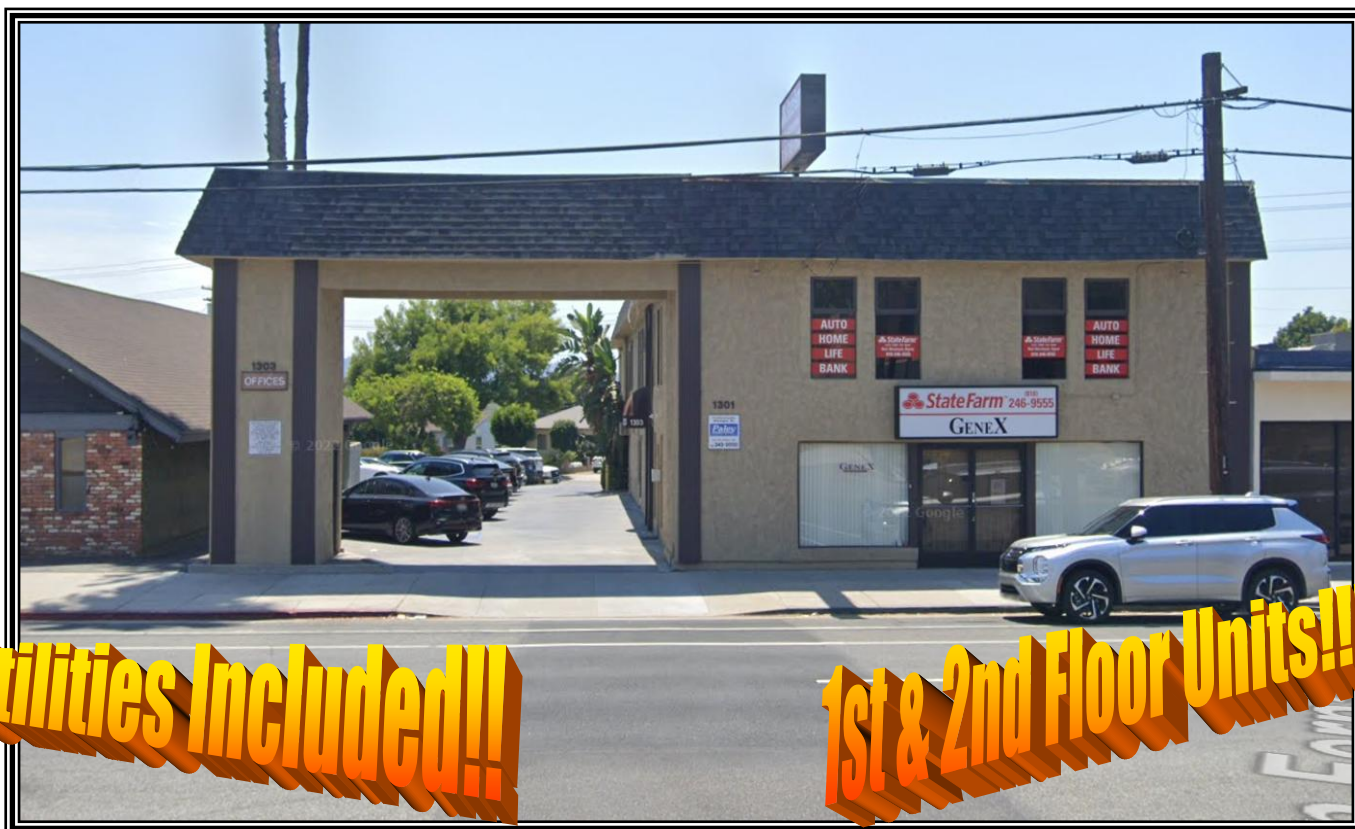


**Prime Burbank Office Units for Lease**  
**1303 N. SAN FERNANDO BOULEVARD**



**Utilities Included!!!**

**1st & 2nd Floor Units!!!**

**LOCATION:**

1303 N. San Fernando Boulevard  
Burbank, Ca 91504

**SIZE/RENTAL RATE:**

**Unit A\*** - 750 +/- sq ft @ \$1,675.00/month, gross  
**Unit A-1** - 120 +/- sq ft @ \$450.00/month, gross  
**Unit 203** - 700 +/- sq ft @ \$1,750.00/month, gross

**AVAILABLE:**

Immediate / June 2025\*

**PARKING:**

Excellent parking for both employees and customers

**COMMENTS:**

- \* Prime location near downtown Burbank
- \* Reasonable rates compared to other properties in the area
- \* Easy access to the 5 freeway
- \* Walking distance to many area amenities

**FOR MORE INFORMATION OR A TOUR, PLEASE CONTACT:**

**Richard L. Paley**

[richard@paleycommercial.com](mailto:richard@paleycommercial.com)

DRE: 00966353

**Alex S. Paley**

[alex@paleycommercial.com](mailto:alex@paleycommercial.com)

DRE: 02073925

**19507 Ventura Boulevard, Tarzana, Ca 91356 ~ Phone (818) 343-3000 ~ Fax (818) 343-3311**  
**[www.paleycommercial.com](http://www.paleycommercial.com)**